



**M.W.A. WELDING (THAILAND) CO., LTD.**

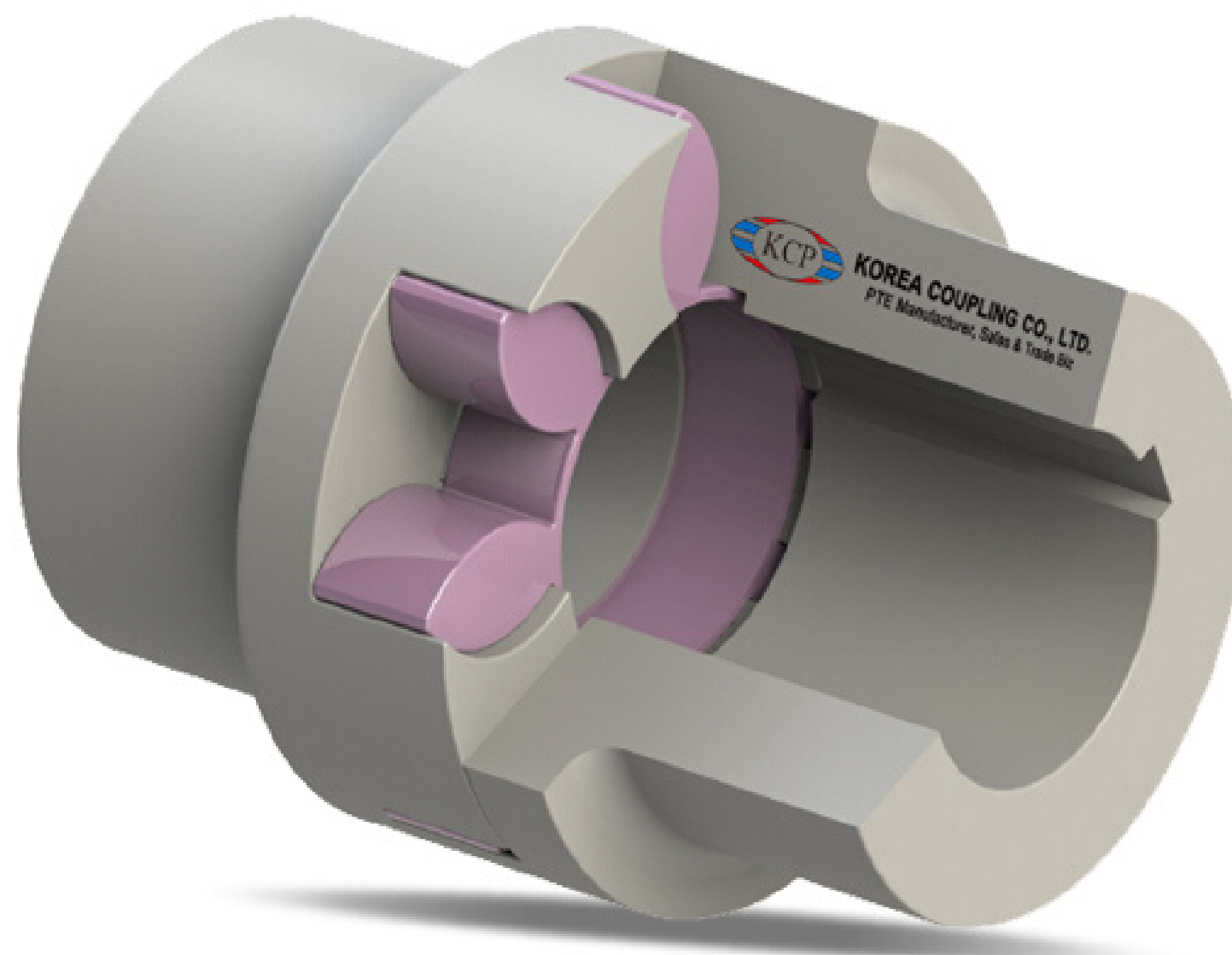
68/88 Moo6 Saothonghin Bangyai Nonthaburi 11140, Thailand

Tel: +662-9030911-2 Fax: +662-9030916

Email: mwathailand@hotmail.com



# JAW COUPLING



- Flexible Shaft coupling
- Damping of torsional vibrations
- Maintenance free
- Zero backlash coupling
- Compensates for misalignment without exerting stresses to components shaft
- Axial plug in
- Easy assembly and inspection visually.



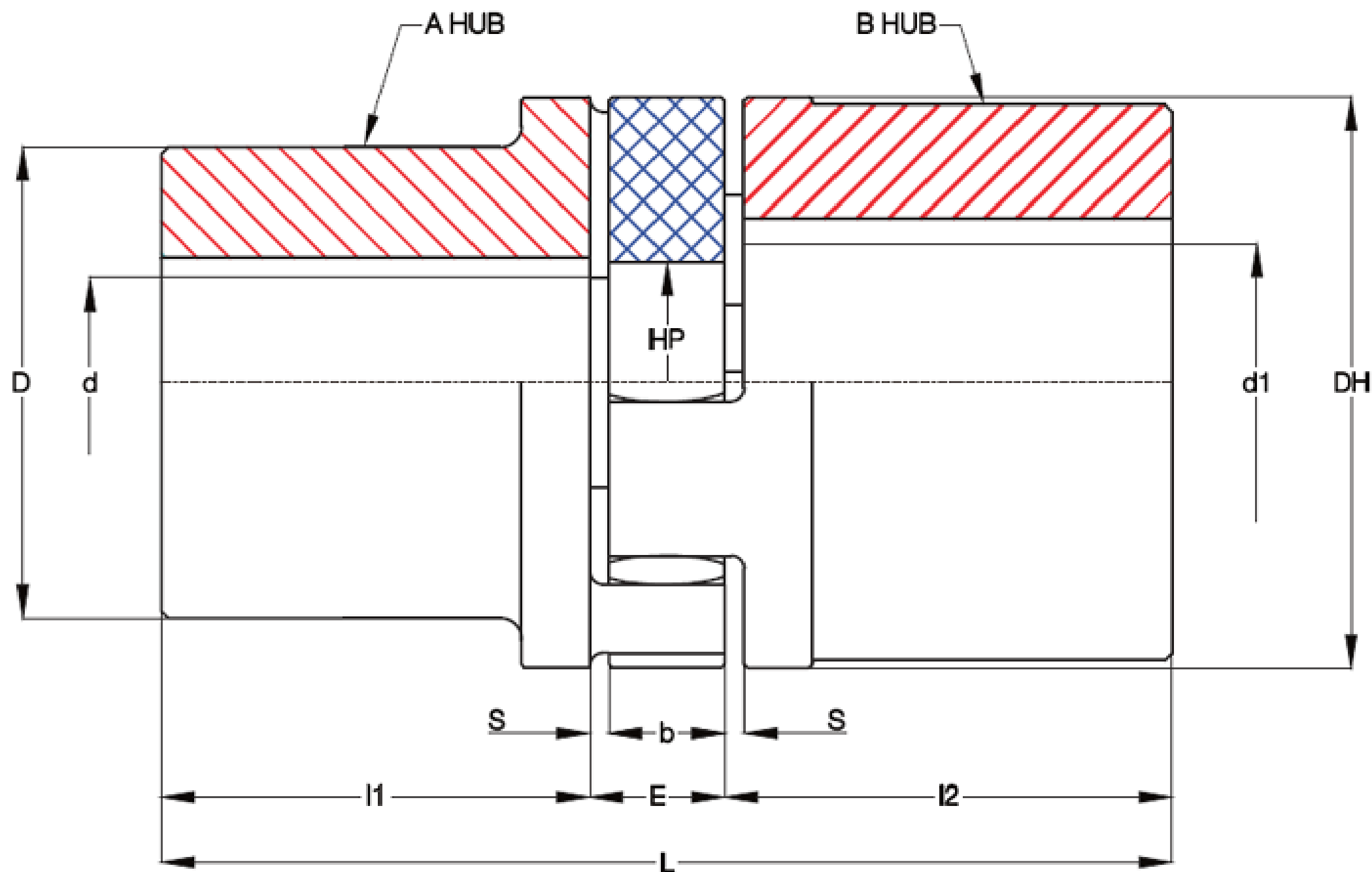
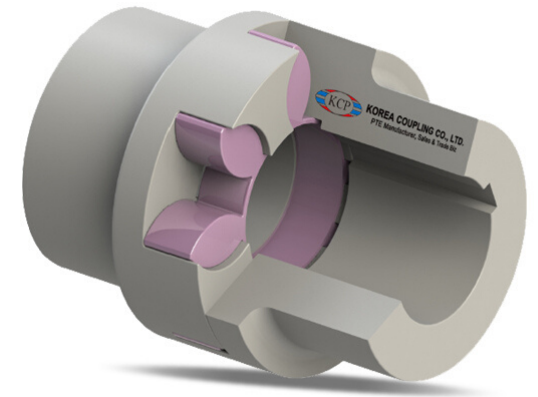
# M.W.A. WELDING (THAILAND) CO., LTD.

68/88 Moo6 Saothonghin Bangyai Nonthaburi 11140, Thailand

Tel: +662-9030911-2 Fax: +662-9030916

Email: mwathailand@hotmail.com

## Type KJ



Size	Hub Type (A . B)	Torque Rating (Nm)	Torque Max (Nm)	Max Bore (mm)	Min Bore (mm)	Allow Speed RPM	Pre Bored (mm)	Dimensions (Millimeters)						Max Torsion Angle	
								D DH	L	l1 l2	E	S	b		dH
19	A	4.9	9.7	19	6	14,000		32	66	25	16	2.0	12	18	3.2°
19/24	A . B	4.9	9.7	24	19	14,000		40			16	2.0	12		
24	A	17.0	34.0	24	9	10,600		40	78	30	18	2.0	14	27	
24/28	A . B	17.0	34.0	28	22	10,600		55			18	2.0	14		
28	A	46.0	92.0	28	10	8,500		48	90	35	20	2.5	15	30	
28/38	A . B	46.0	92.0	38	28	8,500		65			20	2.5	15		
38	A	93.0	185.0	38	12	7,100	11	66	114	45	24	3.0	18	38	
38/45	A . B	93.0	185.0	45	38	7,100	11	80			24	3.0	18		
42	A	130.0	260.0	42	14	6,000	12	75	126	50	26	3.0	20	46	
42/55	A . B	130.0	260.0	55	42	6,000	12	95			26	3.0	20		
48	A	150.0	300.0	48	15	5,600	12	85	140	56	28	3.5	21	51	
48/60	A . B	150.0	300.0	60	48	5,600	12	105			28	3.5	21		
55	A	180.0	360.0	55	20	4,750	18	98	160	65	30	4.0	22	60	
55/70	A . B	180.0	360.0	70	55	4,750	18	120			30	4.0	22		
65	A	205.0	410.0	65	22	4,250	20	115	185	75	35	4.5	26	68	
65/75	A . B	205.0	410.0	75	65	4,250	20	135			35	4.5	26		
75	A	475.0	950.0	75	30	3,550	28	135	210	85	40	5.0	30	80	
75/90	A . B	475.0	950.0	90	75	3,550	28	160			40	5.0	30		
90	A	1,175.0	2,350.0	90	40	2,800	38	160	245	100	45	5.5	34	100	
90/100	A . B	1,175.0	2,350.0	100	90	2,800	38	200			45	5.5	34		

\* Coupling Weight is without Bore Machining